



GAT MONTHLY MEMBERSHIP PROGRESS REPORT

Results as of: 5/31/2021

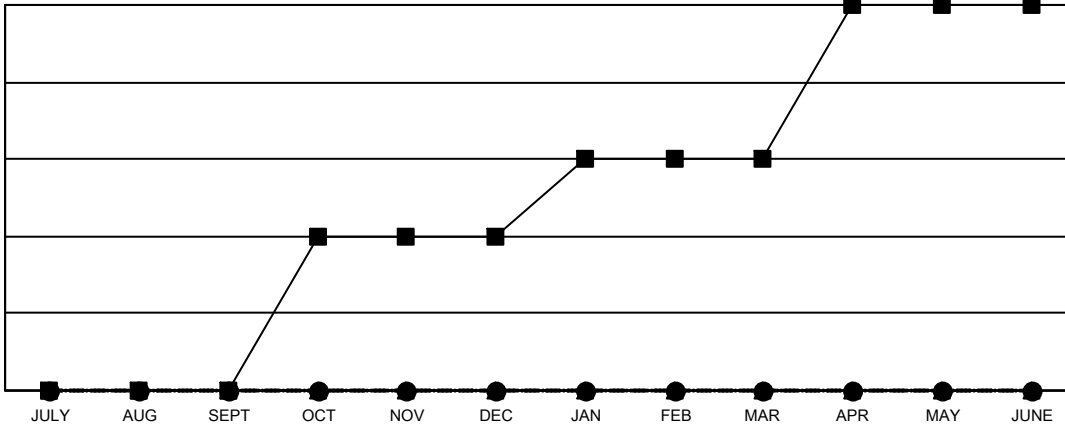
Multiple District 17

LOCATION: KANSAS

Clubs			
RESULTS FOR 2020-2021			
QUARTER	NEW CLUB GOAL	NEW CLUBS	DROPPED CLUBS
JULY/AUG/SEPT	0	0	0
OCT/NOV/DEC	2	0	1
JAN/FEB/MAR	1	0	0
APR/MAY/JUNE	2	0	0

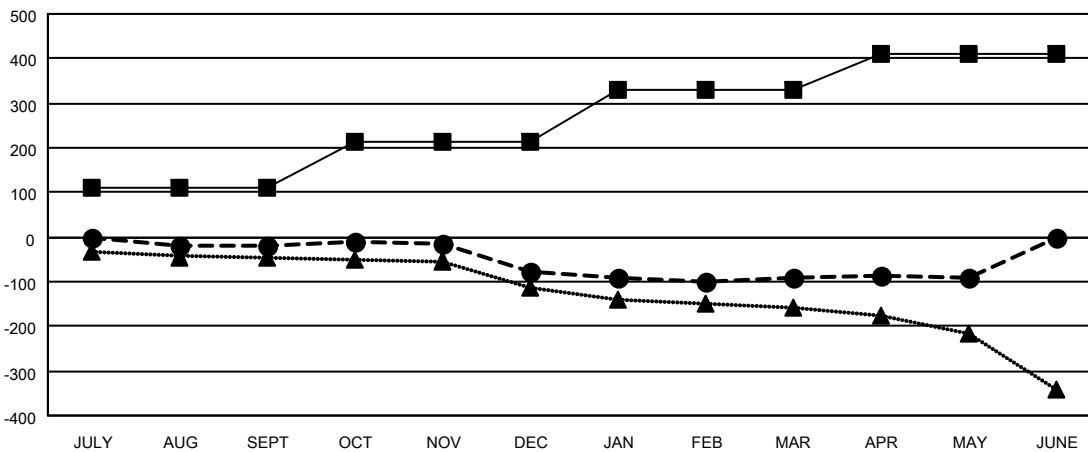
Members			
RESULTS FOR 2020-2021			
QUARTER	MEMBER GROWTH NET GOAL	MEMBER GROWTH ACTUAL	DROPPED MEMBERS ACTUAL (including transfers)
JULY/AUG/SEPT	111	79	94
OCT/NOV/DEC	101	92	144
JAN/FEB/MAR	116	58	67
APR/MAY/JUNE	81	65	64

GOALS AND ACTUAL NEW CLUBS CUMULATIVE



- - CURRENT YEAR GOALS FOR NEW CLUBS
- - CURRENT YEAR ACTUAL NEW CLUBS
- ▲ - LAST YEAR ACTUAL NEW CLUBS

GOALS AND ACTUAL MEMBERS CUMULATIVE



- - MEMBER GROWTH NET GOAL
- - MEMBER GROWTH ACTUAL
- ▲ - LAST YEAR MEMBERSHIP ACTUAL

DROPPED CLUBS: 1	
<u>DROPPED MEMBERS</u>	
DECEASED	70
CLUB CANCELLED	8
OTHER	291
TOTAL	369

99 CLUBS OF 219 ADDED 1 OR MORE NEW MEMBERS

[CLICK HERE FOR CUMULATIVE MEMBERSHIP DATA](#)

<u>GENDER DISTRIBUTION</u>	
MALE	2,963 (69.34%)
FEMALE	1,310 (30.66%)
TOTAL FAMILY UNIT MEMBERS	957
FAMILY MEMBERS PAYING HALF DUES	487